

WELCOME TO

# TRAIL MAGIC

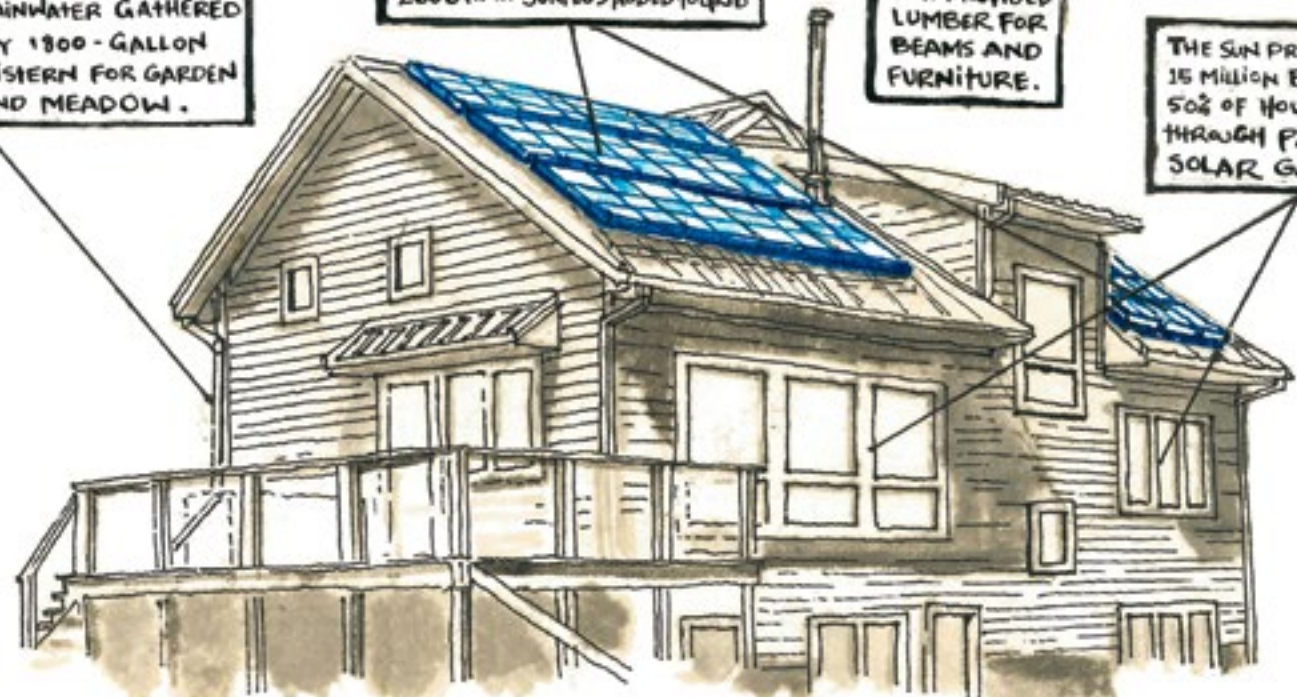
AN ENERGY-EFFICIENT, CLIMATE POSITIVE HOME ON EAST COLLEGE ST.

RAINWATER GATHERED BY 1800-GALLON CISTERN FOR GARDEN AND MEADOW.

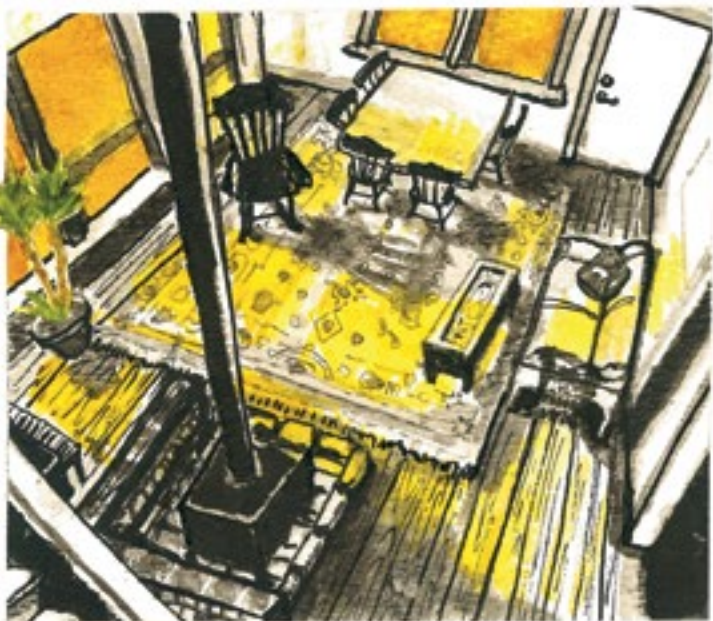
PV SOLAR ARRAY PRODUCES 5200 KWH PER YEAR WITH A 2600 KWH SURPLUS ADDED TO GRID.

ONSITE OAK & ASH PROVIDED LUMBER FOR BEAMS AND FURNITURE.

THE SUN PROVIDES 15 MILLION BTU, OR 50% OF HOUSE HEAT THROUGH PASSIVE SOLAR GAIN.



WOODSTOVE MERELY SUPPLEMENTS GENEROUS PASSIVE-SOLAR HEAT TRANSMITTED THROUGH RADIANT SOUTH-FACING WINDOWS.



A GEOTHERMAL MASS PUMP USES THE POND AS BOTH A HEAT-SINK AND SOURCE, THUS REGULATING HOUSE TEMPS.

TRAIL MAGIC EXEMPLIFIES THE SEAMLESS BLEND OF HUMAN SETTLEMENT, FOOD CROP, & HABITAT.



2012 GARDEN YIELDS: SWISS CHARD 195 lb, BEET 79 lb, ONION 66 lb, TOMATO 370 lb, BROCCOLI 64 lb, POTATO 230 lb, SWEET POTATO 120 lb, SQUASH 620 lb, CARROT 100 lb



SWITCHGRASS, LIATRIS, ECHINACEA, MILLWED, AND RATTLESNAKE MASTER... WHO ARE THESE PEOPLE ??? (HINT: SEE SIDEBAR!)